

PITCH AND NOTATION

NOTE NAMES

Treble Clef

Middle C E G B D F D F A C E G F G A B C A B C D E

Bass Clef

Middle C G B D F A F A C E G B A B C D E C D E F G

Alto Clef

Middle C F A C E G E G B D F A G A B C D B C D E F

Tenor Clef

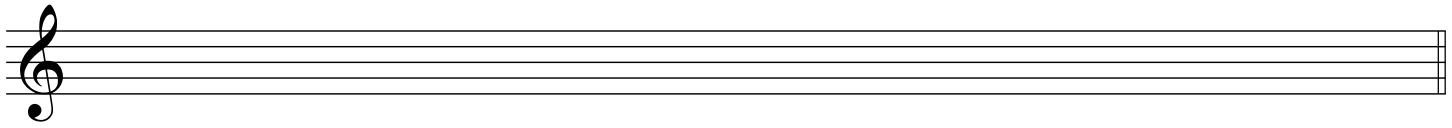
Middle C D F A C E C E G B D F E F G A B G A B C D

1. Name each of the following notes.

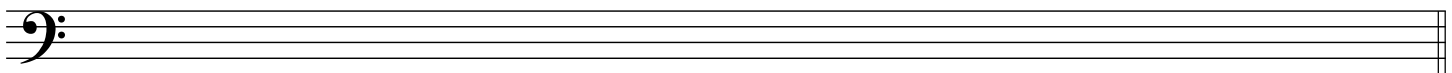
2. Draw each of the following notes using whole notes.

Notation tips for whole notes:

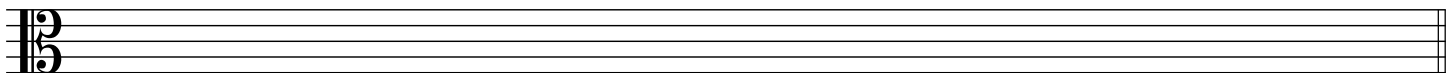
1. Staff lines should be in the middle of line notes. The top and bottom of the note should be in the middle of the spaces, not touching the lines.
2. Space notes should fill the entire space. The top and bottom of the note should touch the lines and not go beyond the lines.



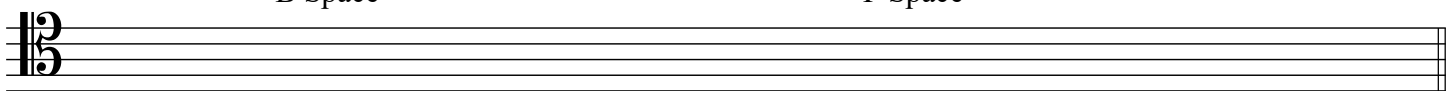
D Space G Line C Space A Space F Line B Line E Space



F Space D Line E Space C Space B Line G Space A Line





















E Line B Space G Line C Line F Space D Space A Line



B Space A Line F Space D Line E Line G Line C Space

NOTE VALUE AND REST NAMES

See Lesson 26 for more information on rhythm

	sixty-fourth note		dotted-quarter note		sixty-fourth rest		quarter rest
	thirty-second note		half note		thirty-second rest		half rest
	sixteenth note		dotted-half note		sixteenth rest		whole rest
	eighth note		whole note		eighth rest		double whole rest
	quarter note		double-whole note				

Drawing Notes with Stems and Flags

1. Up-stems go on the right and down-stems go on the left.
2. Note heads should be filled in completely.
3. Dots go in the same space as the note head or in the space above a line note.
3. Stems on unflagged notes and eighth notes should be 3 spaces tall.
4. Stems on notes with multiple flags should be lengthened to accommodate flags.



Drawing Rests

1. Small heads for eighth, sixteenth, thirty-second, and sixty-fourth rests are drawn in the spaces shown below. Stems should be continue one space below the rest.
2. Quarter rests begin in the top space and end just below the second line. Draw a Z attached to a C to form a quarter rest.
3. Half rests sit on top of the third line and should fill the bottom half of the space.
4. Whole rests sit under the fourth line and should fill the top half of the space.
5. Double-whole rests fill the entire space between the third and fourth lines.



Drawing Beamed Notes

1. Beams on repeated notes should be horizontal and thick enough to be seen when near a staff line. When drawing notes by hand, beams may be angled or lengtened to avoid staff lines.
2. Beams on notes that are changing should be slanted.
3. Shorten or lengthen stems to prevent the beam angle from becoming too long.

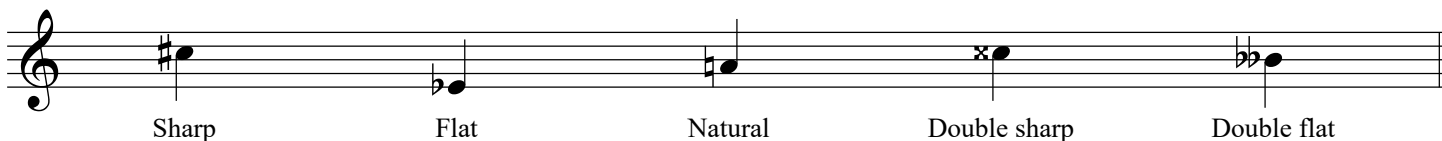


Drawing Accidentals

Sharps: Draw the center of a sharp on the same line or space as the corresponding note head. Vertical lines should be three spaces tall. Horizontal lines should be angled.

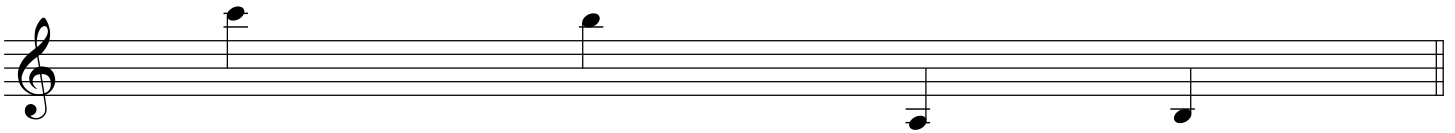
Flats: The round part of a flat should be on the same line or space as the note head. Lines should be 2 1/2 spaces tall.

Naturals: Draw the center of a natural on the same line or space as the corresponding note head. Vertical lines should be two spaces tall. Horizontal lines should be angled.

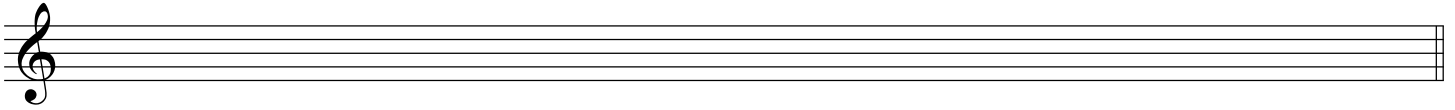


Drawing Notes with Leger Lines

1. Leger lines should be longer than the note heads.
2. Leger lines should be the same distance apart as the staff lines. Draw the leger line(s) before the note head for more accurate spacing.
3. Line notes should have the line going through the middle of the note head and should not touch other leger lines.
4. Space notes should sit directly on top of or below the leger line. There should not be a leger line on the side of the note head that is furthest from the staff.



3. Using correct notation techniques, draw each of the following notes



Quarter note on
space note C

Half note
on leger line
B below staff

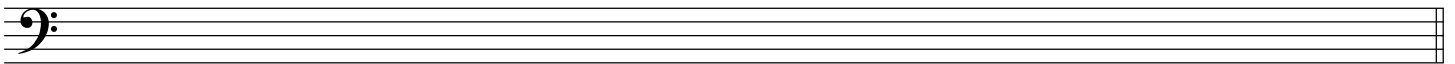
Thirty-second
note on leger line
A above staff

Sixteenth note
on line note E

Dotted-half
note on line
note G

Eighth note
on space
note G

4. Using correct notation techniques, draw each of the following rests.



Thirty-second
rest

Double-whole
rest

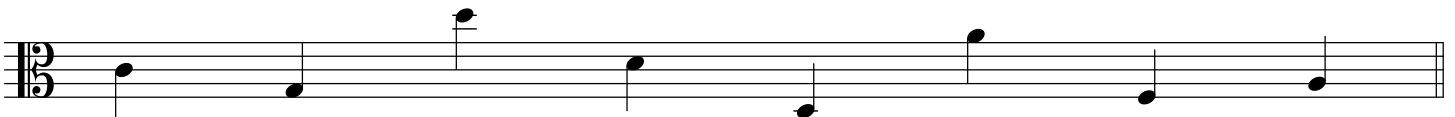
Quarter
rest

Eighth rest

Sixteenth
rest

Half rest

5. Using correct notation techniques, draw the indicated accidental before each of the following notes.



Sharp

Natural

Flat

Double sharp

Double flat

Sharp

Flat

Natural

6. Using correct notation techniques, draw stems on each of the following notes and connect the notes in each measure with a beam.



Eighth notes

Sixteenth notes

Thirty-second notes