

Corrections and Updates

BASICS OF KEYBOARD THEORY

Levels Prep-6: Sixth Edition

Levels 7-9: Fifth Edition

Level 10: Second Edition

Level 5, page 83

Number 1. Give the student the original keys.

Number 1a. *Twinkle, Twinkle Little Star*: Original key: C Major

Number 1 b. *Did You Ever See a Lassie*: Original key: D Major

Level 5, page 49

Number 5e. change to Key of: _____ minor

Level 5, page 74

Number 4i: add "cheerfully, merrily:

Level 7, Page 79

The term *tranquillo* is listed twice.

Level 8, pages 25-28

Diatonic and Chromatic half steps are no longer required for evaluations.

There is an error on the example on page 25. In measure 3, C-sharp to D should be circled, and D-sharp to E should be boxed.

The image shows a musical score for a piece in D major, 2/4 time. The notation is written on a grand staff with a treble clef on the right and a bass clef on the left. The key signature has two sharps (F# and C#). The melody in the right hand consists of several measures. In measure 3, the interval from C# to D is circled, and the interval from D# to E is boxed. The bass line in the left hand consists of several measures, including a whole rest in measure 3.

Clarification: The difference in the two definitions occurs with half-steps that use two different letter names.

In **definition 1**, only half-steps that fall within the diatonic scale (major or any form of minor) will be considered diatonic.

In **definition 2**, any half-step that uses two different letter names will be considered diatonic.

Level 8, Page 52

Number 1, fourth line, last example: use Major key

Level 8, Page 82

Question c, Chord e: remove the slash from the answer line (the chord is not a secondary dominant)

Level 10, page 137

Number 27: Change wording to the following:

27. Based on the tonal center of the answer (not on the first note of the answer), on which scale degree does the answer occur?

Number 30: Change wording to the following:

30. Based on the tonal center of the answer (not on the first note of the answer), on which scale degree does the third voice occur?

Answer Book, Page 32

Page 67 answers, Number 7 is missing

Answer Book, Page 68

Level 5, Page 47, Number 3, second line, second measure, change first chord to ii^{o6} (not ii^6)

Answer Book, Page 107

Page 19, Number 1d: d natural minor (or Aeolian mode)

Page 20, Number 1f: A Major (or Mixolydian mode)

Page 20, Number 1g: g natural minor (or Aeolian mode)

Answer Book, Page 111

Page 52, Number 1 (Applies to Level 8, Sixth Edition only): Updated inversions on some examples:

$V^{7/ii}$ ii $V^9_{5/iv}$ iv $V^7_{/iii}$ iii^6_4 $V^6_{/V}$ V
 $V^6_{4/V}$ V^6 $V^2_{/vi}$ vi^6_3 $V^7_{/ii}$ ii^6_4 $V^7_{/IV}$ IV^6_4
 $V^3_{/ii}$ ii^6 $V^6_{4/iii}$ iii^6 $V^9_{5/V}$ V $V^9_{5/iii}$ iii
 $V^7_{/ii}$ ii^6_4 $V^3_{/VI}$ VI^6 $V^4_{2/IV}$ IV^6 $V^6_{5/V}$

Answer Book, Page 134

Page 60, Number 2f: $V^6_{5/}$ / V (not $V^6_{5/}$ iii)

EAR TRAINING BASICS

Student Books Levels 8-10 and Teacher Book 8-10: The last number of the ISBN on the title page is incorrect in each book. ISBN numbers on the barcode are correct. Correct numbers are:

Level 8: 978-1-891757-23-5

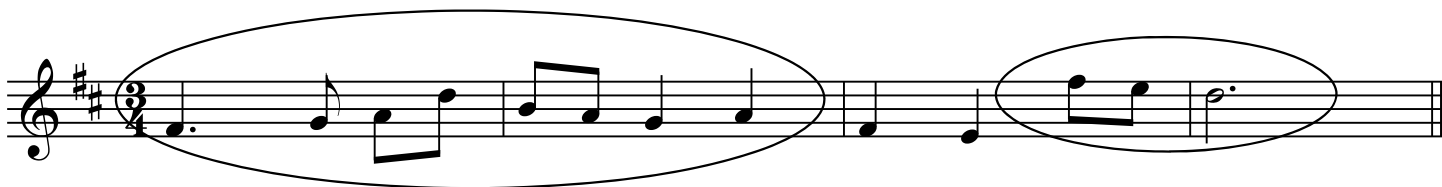
Level 9: 978-1-891757-24-2

Level 10: 978-1-891757-25-9

Teacher 8-10: 978-1-891757-26-6

Teacher Book, Levels Prep-3

Page 76, Number 1: The answer has an incorrect rhythm in second measure. The correct rhythm is:



Teacher Book, Levels 4-7

Page 145, Number 4d: Minor 7th (not Diminished 7th; the notation on the staff is correct)

Page 147, Number 6a: Minor (not Major)

Number 6b: Diminished (not Minor)

Teacher Book, Levels 8-10

Page 32, Number 4 b should be in root position:



Page 44, Number 3b should be minor



Page 52, Number 5c should be diminished 7th:



Page 55, Number 7: Change the instructions to "Mark the Roman numerals that represent the progression."

Page 61, Number 6: Change the instructions to "Play the following chord progression. In the student workbook, the boxed chords are missing the soprano, Roman numerals, and figured bass. Ask the student to draw the missing notes and Roman numerals."

Page 67, Number 6, typo: "Mark the Roman numerals that represent the progression."

Page 73, Number 3: the last note in the bass clef should be a quarter note

Level 9 Student Book

Page 38, Number 6: The Roman numerals are misaligned. Change to:

_____ iv V⁷ i
iv ___ i ___ i₄⁶ V⁷ i

Page 54, Number 6, change the instructions to: "Your teacher will play a chord progression. The boxed chords are missing the soprano and chord symbols. Draw the missing notes, Roman numerals, and figured bass . The example will be played three times."

Page 69, Number 4: delete question **b**. There is only one example to be completed.

Level 10 Student Book

When students are asked to identify Augmented triads with quality and inversion, accept any inversion. Augmented triads sound the same in all three inversions.

Page 45

Number 1: The second measure is incorrect: F double-sharp is missing from first note.



Number 2b: The first note should be A-sharp, not A.

